



ARIZONA DEPARTMENT OF
EDUCATION

Cartwheel

**Supporting safety and mental
health for Arizona schools,
students, and families**

Spring 2025
www.cartwheel.org



Agenda for today

- ✚ Intro from Dr. White (ADE School Safety)
- Overview of Cartwheel
- ◻ Details on the ADE Pilot (eligibility, timeline, funding)
- Feedback for us on how to tailor Cartwheel to the needs you're seeing this year
- ✚ Process for starting a partnership



Partnership with Purpose

The Arizona Mental Health Telehealth Pilot Program



ARIZONA DEPARTMENT OF
EDUCATION



Cartwheel



The Need

The State Legislature recognized a **significant gap** in mental health services available to students and families in rural and remote communities.



The Funding

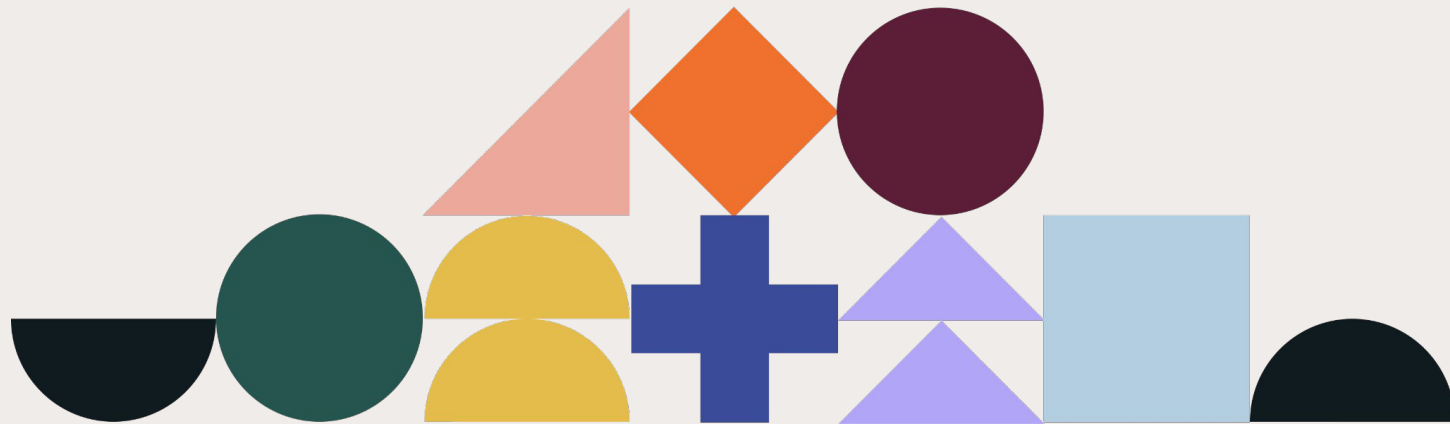
The state of Arizona appropriated funds to develop a partnership with a **highly qualified** mental health service provider to meet the unique needs of students and families in rural and remote Arizona



The Partnership

Through ADE procurement policies and procedures, ADE formally partnered with **Cartwheel** as the highly qualified provider to implement the pilot program

Intro to Cartwheel



What are we hearing from schools?

- 2x increase in youth mental health disorders
- Kids are waiting months to see a clinician
- ✚ Families are often looking to **schools** to fill the gaps
- Staff are stretched and burning out at record rates - *"we can't do this alone"*



Cartwheel is a trusted mental health partner to schools, students, and families

- Reduce **waitlists** for care
- Serve students regardless of **insurance**
- ✚ Expand **clinical hours** (8am-8pm)
- ▲ Meet different **language** needs
- ◆ Involve **parents & guardians** throughout

Provide **peace of mind** to staff

Arizona care team



Licensed Child Psychiatrists

Child psychiatrists with experience serving students and families.



Licensed Therapists

Multilingual team of masters- and doctoral-level licensed clinicians.



Care Coordinators

1-1 partner to families to shepherd them through care. 100% bilingual.



Clinical Program Manager

1-1 partner to school staff. Licensed clinician with 10+ years of experience.





For Arizona students

Evidence-based telehealth for students and families

- 1-1 evidence-based therapy
- Psychiatric evaluations
- Medication management
- Parent guidance
- Family therapy
- *Parental consent and involvement throughout care*



For Arizona schools

Wraparound supports for your families & staff

- **Family support:** Care coordination for every family referred for services
- **School support:** Clinical Program Manager to consult on student cases
- **Skill-building community webinars**
- **Data platform:** Portal to refer students, track progress, and assess outcomes

Easily refer students and track their progress

- 3-5 min to fill out after school gets parental consent
- HIPAA and FERPA compliant
- If parent consents, school can see progress updates in the profile

The screenshot shows the Cartwheel interface for a student named Zain Herwitz. At the top, there's a navigation bar with the Cartwheel logo, 'Referrals', 'Students', a 'Refer a Student' button, and a user profile picture. The main header displays the student's name 'Zain Herwitz' and details '6th Grade, 11 years old, Burlington district'. Below this, the 'Cartwheel services' section shows 'Individual therapy' with a 'Care ongoing' status. It lists the assigned clinician as 'Sydney Denmark' and an upcoming appointment on 'August 20, 2:30pm - 3:30pm (Eastern Time)'. The 'Student profile' section contains a table of personal and contact information. On the right, the 'Recent Activity' feed shows a timeline of events: 'Alice Smith updated Zain's Profile' (External, Today), 'Note from Alice Beatrice, care coordinator' (Internal, April 22, 2023) with a note about an intake appointment, 'Clinician assigned: Sydney Denmark' (External, April 21, 2023), 'Status changed: School info needed' (External, April 21, 2023), 'Referral approved by James Parker' (External, April 21, 2023), and 'New referral by Peggy Hill' (External, April 21, 2023).

Cartwheel Referrals Students Refer a Student

Zain Herwitz

6th Grade, 11 years old, Burlington district

Cartwheel services

Individual therapy Care ongoing

Assigned clinician
[Sydney Denmark](#)

Upcoming appointment
August 20, 2:30pm - 3:30pm (Eastern Time)

Student profile

Student ID	Primary language
XXXX-00021	English
First name	Last name
Diego	Mendez
Preferred name	Pronouns
Diego	He/Him
Date of birth	Age
1/15/2022	10 years old
State	Care coordinator
MA	Taylor Coast

Recent Activity

- Alice Smith updated Zain's Profile** External
Today
- Note from Alice Beatrice, care coordinator** Internal
April 22, 2023

Intake appointment scheduled for 8/20
- Clinician assigned: Sydney Denmark** External
April 21, 2023
- Status changed: School info needed** External
April 21, 2023
- Referral approved by James Parker** External
April 21, 2023
- New referral by Peggy Hill** External
April 21, 2023

See aggregate data at district, school, and grade levels

- Referral trends
- Time to care
- Engagement
- Outcomes
- Family satisfaction
- Demographics (e.g., grade, language)

The screenshot displays the Cartwheel dashboard's 'Impact metrics' section. At the top, navigation links include Metrics, Referrals, Students, Clinicians, and Users, alongside a 'Refer a Student' button and a user profile icon. The main heading is 'Impact metrics', with filters for 'District' and 'School'. Below this are four tabs: 'Referral volume' (selected), 'Student engagement', 'Student demographics', and 'Clinical outcomes'.

Referral volume

Approved referrals this year
78
It all starts with your help – thank you for connecting students to Cartwheel.

Schools referring students
60%
6 out of 10 schools have one or more approved referrals.

School staff referring students
80%
24 out of 30 staff members with Cartwheel accounts have one or more approved referrals.

Top reasons for referral

Anxiety (20) Depression (18) School avoidance (15) Coping (12) Anger (10)
Trauma (10) Stress (8) Family issues (8) Loss and grief (6) Relationships (4)

How many referrals are being approved each month?

Seasonal fluctuations in referral volume are common and expected.

Month	Volume	Category
Jul	20	Low volume
Aug	30	Low volume
Sep	80	Expected volume
Oct	140	Strong volume
Nov	100	Expected volume
Dec	90	Expected volume
Jan	30	Current month
Feb	0	Expected volume
Mar	0	Expected volume
Apr	0	Expected volume
May	0	Expected volume
Jun	0	Expected volume

How is your district tracking towards the contract?

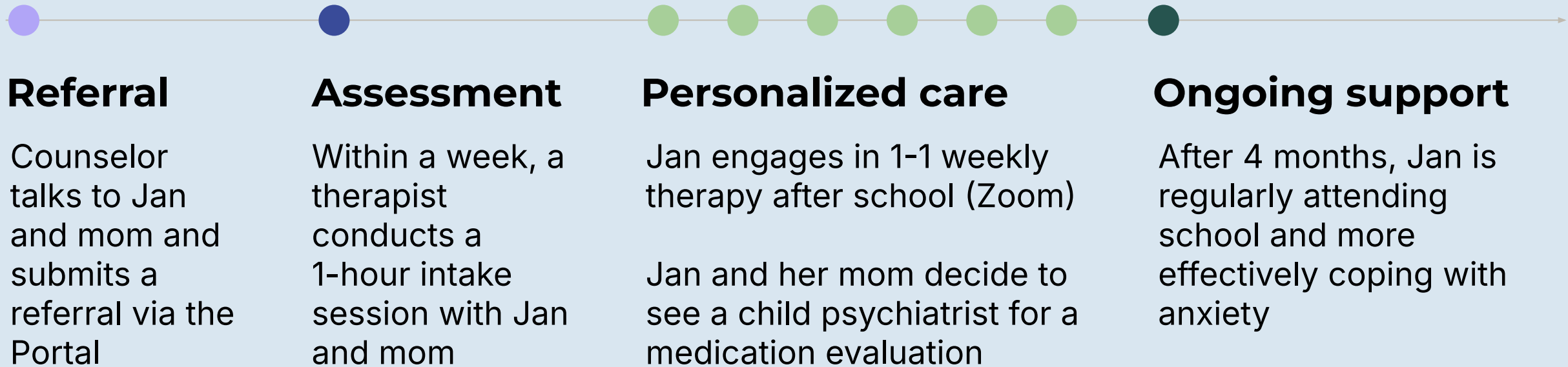
33% utilized
Your district is on track to making full use of your contract.

First session scheduled: 40 Contract total: 120

Students with a first session scheduled will be counted towards the contract total. It is normal for this to be lower than approved referrals as students make their way into care.

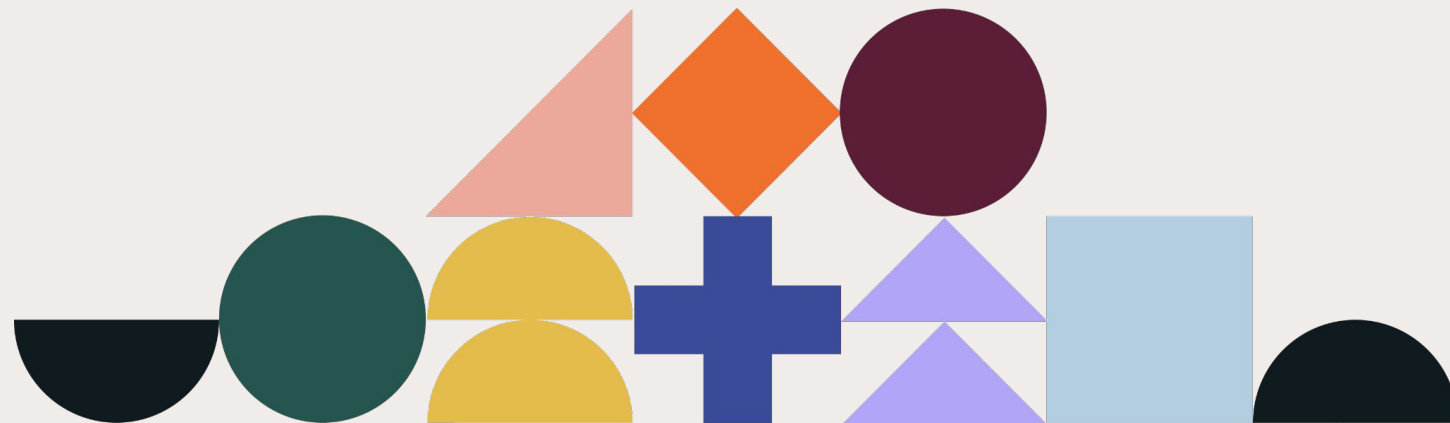
Anonymized student: Jan, grade 9

Jan missed 25 days of school. She's been struggling to adjust to the new school since moving from out-of-state and feels anxious about entering the school building. She's coping with some substance use.



With consent, ongoing collaboration between the school counselor, parent, and Cartwheel to help the student succeed

How does the ADE Grant work?



Guiding principles

- The goal is to lighten your load, not add complexity or “another thing”
- We have a simple, proven implementation plan
- Still, we know every district is different, so we tailor Cartwheel to your existing context as best we can
- We handle data collection and impact reporting back to ADE



ADE Grant Overview

- ADE selected Cartwheel as its mental health telehealth partner
- Available to all districts and charters in 13 counties outside Pima and Maricopa, including BIE schools
- No cost to districts. Commitments from partner districts on how we can ensure high quality and strong partnership.
- Rolling launch dates started in March, with services available through end of 2025-26 school year
- Working with ADE to secure sustainable funding, based on district engagement



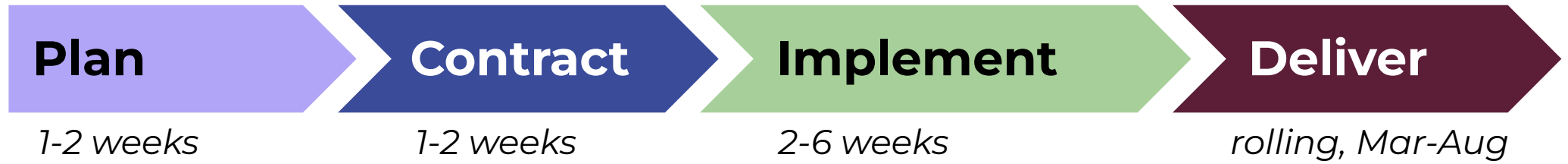
Supporting Native American communities

- Coordinating with tribal leaders and with those already serving tribal communities, including IHS, AHCCCS and MCO tribal liaisons, TRBHAs, ITCA, AACIHC, and others.
- Hiring locally and training our clinical teams. We have multiple clinicians from the Navajo Nation and a majority of our clinicians have experience serving tribal populations.
- Listening, and adapting to each school's and to each family's unique needs.



We are eager to hear from you on how we can best support students and families in your communities.

Simple, proven implementation plan



Activities

1-2 meetings to learn about your district and answer FAQs

Review and sign a Memorandum of Understanding (MOU)

1-2 meetings to tailor Cartwheel processes & protocols to your local context

We'll lead a 60-90 min live training and start getting students care!

Audience

Head of student services and/or special education, and/or superintendent

Superintendent

Head of student services, special education, or equivalent role

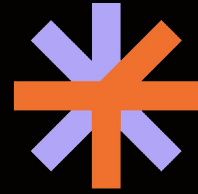
School staff eligible to make referrals (e.g., counselors, social workers, building admins)

We're excited to support the great work you do every day for kids and families.



- Request a 1-1 meeting at: www.cartwheel.org/arizona
- Services are live as of March
- District onboarding is in progress (rolling dates throughout spring and early fall)





Cartwheel

Contact our AZ Partnerships Manager, Alvin Padolina, to learn more:

Email: alvin.padolina@cartwheelcare.org

Website: www.cartwheel.org/arizona

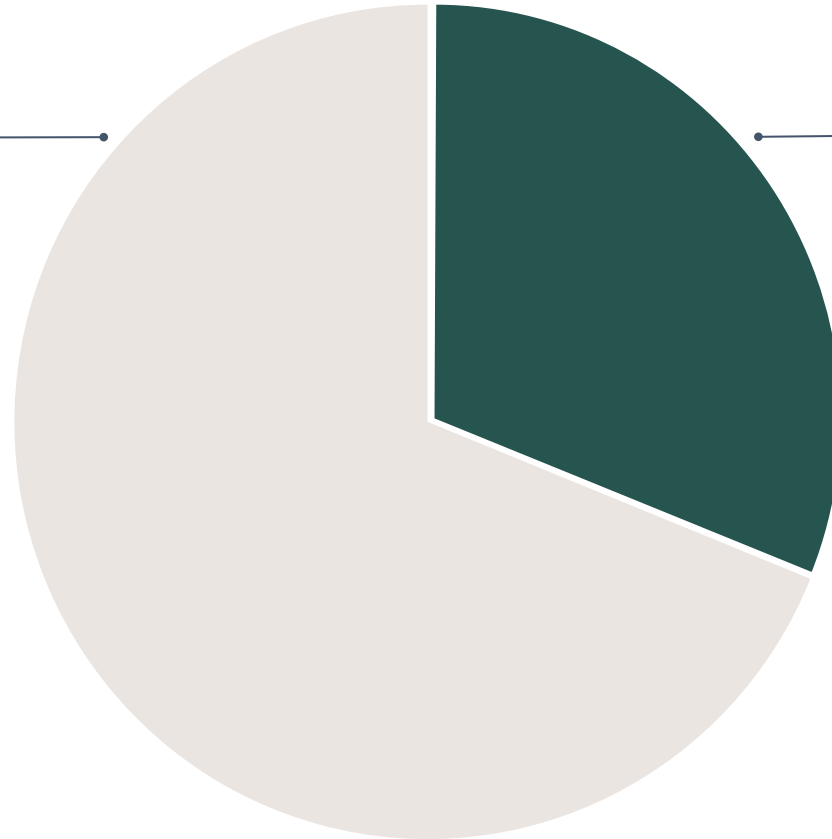


ADE covers district costs for 18 months

Health insurance reimbursement

\$0 copay for families with Medicaid

In-network copay for families with any other AZ insurances



ADE contribution

Covers non-billable components

Overstaff to ensure equity & no waitlist

Financial aid fund for uninsured or underinsured families

Note: We're working with ADE to secure funds for 2026-27 and beyond