

ACADEMIC ACHIEVEMENT & INCLUSIVE PRACTICES

ADE | EXCEPTIONAL STUDENT SERVICES

JANUARY 2025
PROFESSIONALS CHECK-IN



Welcome!



Stacy Riccio
Director of Academic
Achievement &
Inclusive Practices



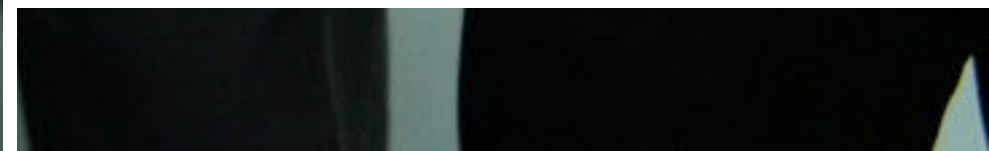
Rob Hilliker
Lead Professional
Learning Specialist

Agenda

- ❑ Share the Focus of Academic Achievement & Inclusive Practices
- ❑ Define Professional Learning and Technical Assistance
- ❑ Projects and Resources Available
- ❑ Additional Agency Resources
- ❑ How to Contact Us



Mission: Academic Achievement & Inclusive Practices serves the educational landscape by increasing the knowledge and skills of professionals serving students with disabilities so that students are provided FAPE to achieve academic and functional outcomes and maximize their potential.



Primary Focus



- ❑ Creates, maintains, and leverages strong collaboration with authentic partners and effectively communicates between external and internal entities
- ❑ Creates, maintains, and leverages systems to enhance the adult actions that impact student outcomes.
- ❑ Uses appropriate data to make decisions and evaluate results
- ❑ Prioritizes and provides targeted technical assistance and professional learning
- ❑ Ensures state-level integration between special education and general education



Professional Learning & Technical Assistance

Professional Learning and Technical Assistance (TA) helps teachers, other instruction professionals, leadership, and parents develop new systems, methods, and skills to improve student outcomes. It is a form of capacity development involving internal and external activities. It is often interactive, sustained, and customized to targeted needs.

- ❑ Ensure personnel have the content knowledge and skills to serve students with disabilities
- ❑ Provide support so students with disabilities are educated in the least restrictive environment (LRE) with High-leverage and Evidence-Based Practices.
- ❑ Provide technical assistance individually and in group settings through multiple modalities

Targeted Technical Assistance

Targeted Technical assistance means assisting in identifying, selecting, or designing solutions based on data and research, including professional learning and high-quality training to implement solutions leading to improved teaching and learning outcomes toward student achievement.

Aligned to:

- Achievement and LRE Data trends across the state
- SSIP- State Systemic Improvement Plan
- Cross-Agency connections

PROJECTS & RESOURCES

Meet the Academic Achievement & Inclusive Practices Team



Christy Hegebush
Autism & Low-Incidence Disabilities Specialist



Jenifer Fernandez
Universal Design & Inclusive Professional Learning Specialist



Rob Hilliker
Lead Professional Learning Specialist



Chelsey Branham
Professional Learning Project Specialist



Anissa McGough
Project Specialist II



Paige Morgan
Data Literacy Specialist

The AA&IP Team

Arizona Professional Learning Series (AZPLS) K-8



Fall
2025

Provides district and school teams with a process to guide and assist in building a foundation for systems change that will impact literacy outcomes by closing the achievement gap for students with specific learning disabilities.

Modules for Professional Learning:

General Education & Special Education
Collaboration

Formative Assessment

Evidence-Based Literacy Strategies Across
Disciplines

Differentiation and Universal Design for Learning

Systems:

- Data Driven
- Coaching
- Sustainable Implementation
- Leadership
- Action Planning
- Team Structures

STAR Autism PreK- H.S.

Primary and Secondary Professional Learning:

- E-schedules
- Classroom Set Up
- Home Support
- Curriculum Supports
- Extended School Year

Provides curriculum materials, workshops, and on-site coaching to school staff who work with students with autism. The goal is to help others successfully implement research-based applied behavior analysis (ABA) techniques and for every child with Autism to receive effective instruction!

starautismsupport.com/AZ-SOLS-Access





Fall
2025

Teaching Partners: Sparking Curiosity with Problem Solving in Mathematics, Grades 4-9

Provides in-person, virtual, and classroom coaching visits to support general education and special education teachers with the collaborative planning and implementation of math language routines that help students succeed at complex tasks.

Virtual and In-person Professional Learning:

- General Education and Special Education Collaboration
- On-site Coaching
- Action Planning for Sustainable implementation

Virtual and In-person Professional Learning:

- General Education and Special Education Collaboration
- On-site Coaching
- Action Planning for Sustainable implementation

Building Number Sense K-3

Cognitively Guided Instruction (CGI) is a **student-centered approach to teaching math**. It starts with what your students already know and builds on their natural number sense and intuitive approaches to problem-solving.



Provides open webinars throughout the school year to understand what UDL is as an inclusive approach to designing environments and experiences built on the unique needs of all students.

Additional technical assistance and professional learning are offered to meet the site's unique implementation needs.

Session Focus for Spring 2025:

- Introduction to UDL
- The Engagement Toolbox
- Leading for Inclusion
- Elevating Student Voice and Choice
- Reading, Writing, and Thriving
- Representation Reimagined

Universal Design for Learning (UDL)

Inclusionary Practices

DATA-DRIVEN LITERACY

Supporting schools and districts with the implementation of specially designed instruction so that students with disabilities have access to the AZ ELA Standards. This includes:

- High-leverage Practices
- Evidence-based Practices

MATH STRATEGIES

Supporting schools and districts with the implementation of specially designed instruction so that students with disabilities have access to the AZ Math Standards. This includes:

- High-leverage Practices
- Evidence-based Practices
- Language Routines



Academic Achievement & Inclusive Practices

Exceptional Student Services

Academic Achievement and Inclusive Practices (AA&IP) serves the educational landscape by increasing the knowledge and skills of professionals serving students with disabilities. As part of IDEA's general supervision framework, key components of AA&IP are the [targeted academic achievement](#) and [least restrictive environment](#) resources, supporting inclusionary practices, providing professional learning, and technical assistance to districts, schools, and parents. The technical assistance provided is a collaborative and coordinated approach to facilitate the building of capacity for educators, parents, and community members in their understanding and implementation of evidence-based practices.

Least Restrictive Environment (LRE)

[Educational Environments for Children with Disabilities](#)

[IRIS Center LRE](#)

Universal Design for Learning (UDL)

[K-12 Academic Standards](#)

[ADE Assistive Technology](#)

Academic Achievement & Inclusive Practices Website

Additional Agency Resources

- ❑ K-12 ELA
- ❑ K-12 Math
- ❑ OELAS
- ❑ Office of Indian Education
- ❑ Early Childhood Special Education
- ❑ Assistive Technology

THANK YOU

Contact Us:

Academic Achievement & Inclusive
Practices

ESSAcadAchIncPractices@azed.gov



Brita Tam
502-555
brita@fi
www.first
.com
.com