



Comprehensive Support and Improvement 102a: The Data Dashboard

Arizona Department of Education

Christina Aldrich – Director of School Support and Improvement
Russel Potter, Ph.D. – Data Specialist

CSI Data-Driven Decisions

- Part 1 – Understanding scores and identification
 - How does a school get identified?
 - What counts for what model?
- Part 2 – Data and the Static File
 - **102a: Dashboard access and interpretation**
 - 102b: Basic filtering to address questions
- Part 3 – Interrogating the Data
 - Deeper analysis with pivot tables
 - Answering 2-, 3-, and 4-category questions

▼ Technical Manuals & Codebooks

Current

A-F Letter Grade Technical Manuals

- [Fiscal Year 2022 K-8 Traditional Schools Business Rules](#) (Posted 3/3/2022)
- [Fiscal Year 2022 9-12 Traditional Schools Business Rules](#) (Posted 5/10/2022)
- [Fiscal Year 2022 Alternative Schools Business Rules](#) (Posted 5/10/2022)
- [Fiscal Year 2022 Non-Typical Schools Business Rules](#)(Posted 5/10/2022)

Federal Accountability Technical Manuals

- [CSI/ATSI/TSI 2022 Business Rules](#)
- [CSI/ATSI/TSI 2021 Business Rules](#)

Graduation

- [Graduation, Dropout, and Persistence Rate Technical Manual](#) (Updated January 2022).

Codebooks

- [Static File Codebook 2022](#)

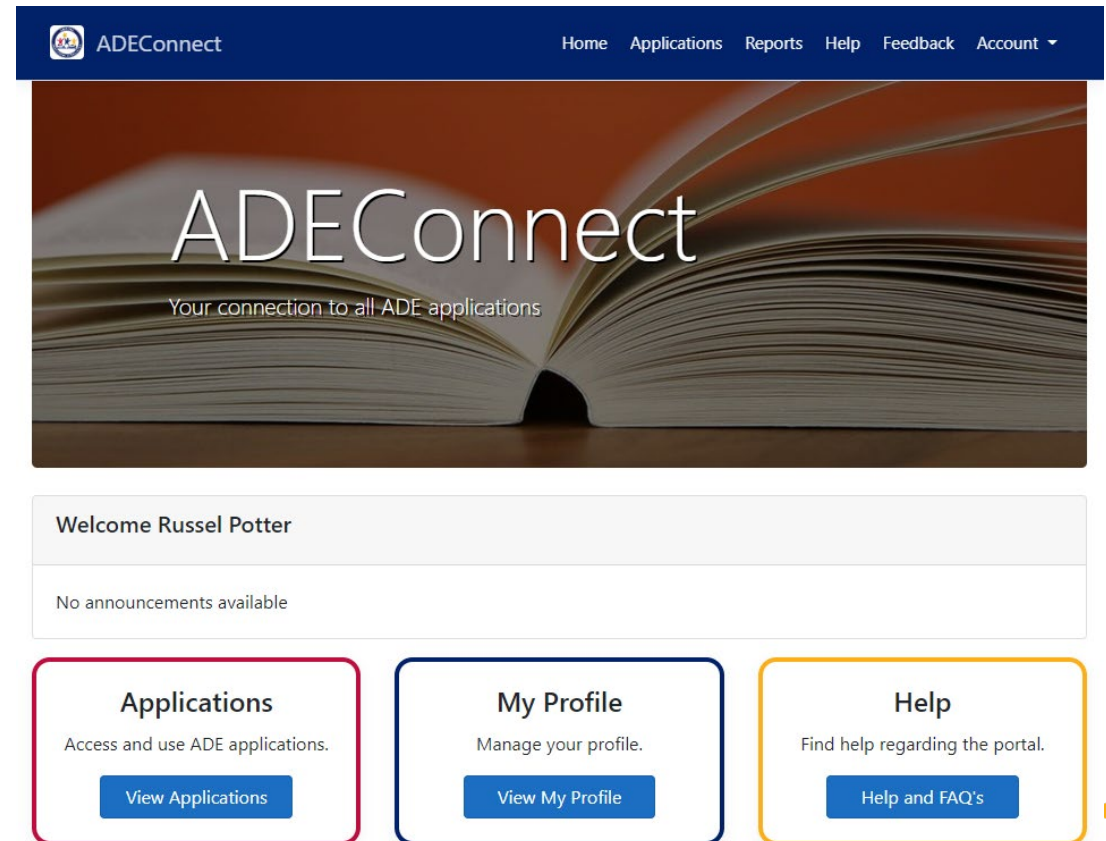
urces

- Static File Codebook
- Federal Business Rules
- Graduation, Dropout, & Persistence Rate Technical Manual
- AASA, AzSCI, ACT Cut Scores
- Alternative Assessments

Introduction to the Data

- Access and interpretation
 - Dashboard
 - Static File
- Basic filtering to address questions

<https://adeconnect.azed.gov/>



The screenshot shows the ADEConnect web application interface. At the top, there is a dark blue navigation bar with the ADEConnect logo on the left and a menu with items: Home, Applications, Reports, Help, Feedback, and Account. Below the navigation bar is a large banner image of an open book with the text "ADEConnect" in large white letters and "Your connection to all ADE applications" in smaller white text below it. Underneath the banner is a white box containing the text "Welcome Russel Potter" and "No announcements available". At the bottom, there are three colored boxes with rounded corners: a red box for "Applications" (Access and use ADE applications. View Applications), a blue box for "My Profile" (Manage your profile. View My Profile), and a yellow box for "Help" (Find help regarding the portal. Help and FAQ's).

ADE Connect – Applications

- Depending on your access, you may see more or fewer options
- *Accountability* is the ADE department responsible for collecting and calculating data

Applications [Hide All]

Arizona Department of Education (79275)	[-]
Accountability	☆ ↗
A-F Self-Reporting Data	☆ ↗
Education Organization System	☆ ↗
Event Management System (EMS)	☆ ↗
File Metrics	☆ ↗
Grants Management	☆ ↗

Independent Applications	[-]
Certification Portal	☆ ↗
ESA Applicant Portal	☆ ↗
Event Management System (EMS)	☆ ↗

Navigation 🔍

Search for entity

Arizona Department of Education (79275)

Independent Applications

ADE Connect – Applications - Accountability



State and Federal Accountability

- **Accountability: State & Federal Profile**
- Traditional A-F College and Career Readiness Indicator Self Reporting Spreadsheet
- Traditional A-F College and Career Readiness Indicator Self Reporting Spreadsheet Instructions
- Alternative A-F College and Career Readiness Indicator Self Reporting Spreadsheet
- Alternative A-F College and Career Readiness Indicator Self Reporting Spreadsheet Instructions

Accountability Reports

- **Grad Rate Report**
- Dropout Rate Report
- Persistence Rate Report
- CCRI Reports

Student Level Assessment Data

- Download Testing Data

Accountability Administration

- File Upload Manager
- Application Messaging Tool

State and National Assessment Data

- Student Demographic Corrections

- CSI and (a)TSI are Federal Programs
- The **State & Federal Profile** has the complete record of school performance
- Accountability also produces the **Grad Rate** report

State and Federal Profile

Arizona Department of Education

Accountability: State & Federal

Welcome Russel Potter!
Russel Potter

Home ADEConnect Accountability Logout

Home

Fiscal Year: 2021

Download A - F Detail as an Excel File

Warning! Due to the volume of your static file, the download may take several minutes.

Show 10 entries Search:

		State			Federal			
Entity Name	Entity ID	K-8 Letter Grade	9-12 Letter Grade	Non-Typical School Configuration Letter Grade	Additional Targeted Support & Improvement (aTSI) *	Comprehensive Support & Improvement (CSI) - Low Achievement *	Comprehensive Support & Improvement (CSI) - Low Graduation	Targeted Support & Improvement (TSI) *

- You have access to your school, potentially others in your LEA
- Dashboard
- Static File: Student-level data

School Accountability Dashboard

Entity Name	Entity ID	State			Federal			
		K-8 Letter Grade	9-12 Letter Grade	Non-Typical School Configuration Letter Grade	Additional Targeted Support & Improvement (aTSI) *	Comprehensive Support & Improvements (CSI) - Low Achievement *	Comprehensive Support & Improvements (CSI) - Low Graduation	Targeted Support & Improvement (TSI) *
Abbott Unified	1234321	P	P	-	aTSI	CSI-K8	CSI-G	

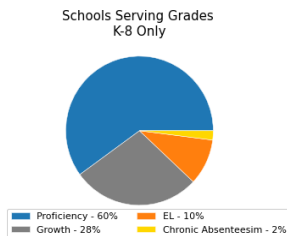
- This graphic user interface (GUI) provides access to final reports
 - Letter Grades
 - CSI-LA Report
 - CSI-G Report
 - aTSI
 - TSI
- Note – Federal reports are only created for identified programs

		State			Federal			
Entity Name	Entity ID	K-8 Letter Grade	9-12 Letter Grade	Non-Typical School Configuration Letter Grade	Additional Targeted Support & Improvement (aTSI) *	Comprehensive Support & Improvements (CSI) - Low Achievement *	Comprehensive Support & Improvements (CSI) - Low Graduation	Targeted Support & Improvement (TSI) *
Abbott Elementary	1234321	P			aTSI	CSI-K8		

School Accountability Dashboard

- State letter grades are on the left
- Schools identified by any Federal metric will have a link on the right

Category	Weight	Points
Proficiency	60%	16.67
EL	10%	3.00
Growth	28%	15.12
Chronic Absenteeism	2%	1.54
All Students Total Points		36.33
Total Points Eligible		100.00
Total Points Earned		36.33
Bottom 5% Threshold		21.99
Percent Tested		89.03%



Accountability Dashboard

- Identification Model, School Name and ID, Fiscal Year
- Split Summary and Model Pie
- 4 Year* Trend
- Proficiency
- Growth
- EL and Chronic Absenteeism
- Dropout Rate
- Graduation Rate

4-Year Trend of Overall CSI Performance					
Fiscal Year	Proficiency Points	EL Points	Growth Points	Chronic Absenteeism Points	Overall Points
2019	14.15	4	9.16	7.41	.
2020*	.	4	.	8.20	.
2021
2022	16.67	3.00	15.12	1.54	36.33

Proficiency - 60%				View Data	
Grade	Number Proficient	FAY Students	Percent Proficient		
3	63.00	177.00	35.96%		
4	55.00	183.00	30.43%		
5	64.00	176.00	36.36%		
6	57.00	174.00	32.76%		
7	51.00	180.00	28.33%		
8	36.00	158.00	22.78%		
Percent Proficient All Students		326	1,048.00	31.11%	
Proficiency Points				16.67	

Growth - 28%			View Data
Grade	Students with a Growth Score	Median SGP	
5	138.00	57.50	
6	156.00	52.00	
7	141.00	58.00	
8	127.00	47.00	
Median SGP All Students		54.00	
Growth Points		15.12	

EL Proficiency and Growth - 10%		View Data		Chronic Absenteeism - 2%		View Data	
				Chronic Absenteeism Percent		Points	
Total EL Proficiency Points		1.00		Fiscal Year 2022		22.85%	
Total EL Growth Points		2.00				1.54	
EL Proficiency & Growth Points		3.00					

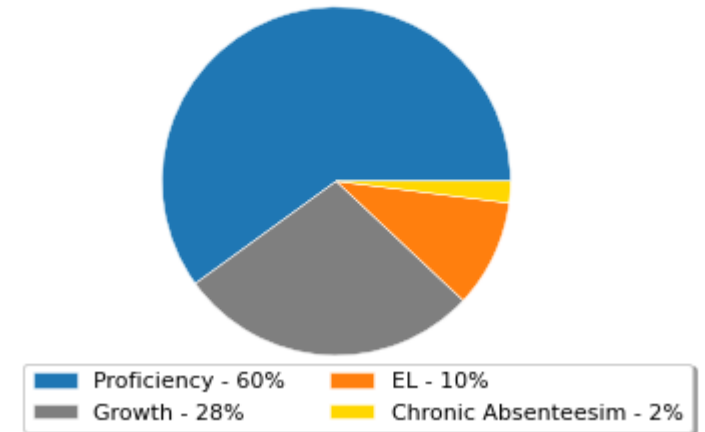
Dropout Rate - 5%			View Data
Fiscal Year	Percentage	Points	
2022	6.38%	4.68	

Graduation Rate - 5%			View Data
Cohort	Percentage	Points	
Cohort 2021	73.91%	3.70	

**Federal CSI-K8
Abbott Elementary (1234321)
FY 2022**

Category	Weight	Points
Proficiency	60%	16.67
EL	10%	3.00
Growth	28%	15.12
Chronic Absenteeism	2%	1.54
All Students Total Points		36.33
Total Points Eligible		100.00
Total Points Earned		36.33
Bottom 5% Threshold		21.99
Percent Tested		89.03%

Schools Serving Grades
K-8 Only



4-Year Trend of Overall CSI Performance					
Fiscal Year	Proficiency Points	EL Points	Growth Points	Chronic Absenteeism Points	Overall Points
2019	14.15	4	9.16	7.41	.
2020*	.	4	.	8.20	.
2021					
2022	16.67	3.00	15.12	1.54	36.33

Proficiency

Federal CSI-K8
Abbott Elementary (1234321)
FY 2022

Proficiency - 60%			View Data
Grade	Number Proficient	FAY Students	Percent Proficient
3	63.00	177.00	35.96%
4	55.00	183.00	30.43%
5	64.00	176.00	36.36%
6	57.00	174.00	32.76%
7	51.00	180.00	28.33%
8	36.00	158.00	22.78%
Percent Proficient All Students	326	1,048.00	31.11%
Proficiency Points			16.67

ELA Proficiency

ELA Fiscal Year 2022						
Grade	Number FAY Tested	Number MP	Number PP	Number P	Number HP	Percent Proficient
3	82	25	28	17	12	35.37%
4	82	19	27	20	16	43.90%
5	75	19	22	24	10	45.33%
6	80	26	23	19	12	38.75%
7	75	19	28	20	8	37.33%
8	66	23	25	12	6	27.27%
All Students	460	131	153	112	64	38.48%

State Academic Assessment – ELA				
Percent Proficient 4-Year Data				
Grade	Fiscal Year 2019	Fiscal Year 2020	Fiscal Year 2021	Fiscal Year 2022
3			31.36%	35.37%
4			14.29%	43.90%
5			40.02%	45.33%
6			19.31%	38.75%
7			24.08%	37.33%
8			34.17%	27.27%

Mathematics Proficiency

Mathematics Fiscal Year 2022						
Grade	Number FAY Tested	Number MP	Number PP	Number P	Number HP	Percent Proficient
3	86	33	18	19	16	40.70%
4	83	42	21	13	7	24.10%
5	75	30	17	20	8	37.33%
6	82	41	15	17	9	31.71%
7	75	36	16	11	12	30.67%
8	67	36	13	9	9	26.87%
All Students	468	218	100	89	61	32.05%

State Academic Assessment – Mathematics				
Percent Proficient 4-Year Data				
Grade	Fiscal Year 2019	Fiscal Year 2020	Fiscal Year 2021	Fiscal Year 2022
3			31.36%	40.70%
4			14.29%	24.10%
5			40.02%	37.33%
6			19.31%	31.71%
7			24.08%	30.67%
8			34.17%	26.87%

Growth

Growth - 28%		View Data
Grade	Students with a Growth Score	Median SGP
4	126.00	53.50
5	138.00	57.50
6	156.00	52.00
7	141.00	58.00
8	127.00	47.00
Median SGP All Students		54.00
Growth Points		15.12

Growth Data

Growth

ELA		
Grade	FAY Students with a Growth Score	Median SGP
4	124	53.00
5	122	51.50
6	156	54.25
7	139	58.00
8	125	47.00
ELA Median SGP All Students		54.00

Mathematics		
Grade	FAY Students with a Growth Score	Median SGP
4	126	54.50
5	133	59.50
6	145	52.00
7	131	58.00
8	120	51.00
Mathematics Median SGP All Students		56.75

EL Proficiency and Growth

Federal CSI-K8
Abbott Elementary (1234321)
FY 2022

EL Proficiency and Growth - 10%	View Data
Total EL Proficiency Points	1.00
Total EL Growth Points	2.00
EL Proficiency & Growth Points	3.00

Chronic Absenteeism - 2%		View Data
	Chronic Absenteeism Percent	Points
Fiscal Year 2022	22.85%	1.54

English Learner (EL)

K-8 EL VIEW DATA

Total Number of EL FAY Students

77

Percent Proficient of EL FAY Students

Number of Proficient Students

40

Total Number Tested

71

Transformed Percent Proficient

63.72%

Transformed Statewide Percent Proficient

21.94%

Percent Growth of EL FAY Students

Number of Students Improving 1 Proficiency Level

17

Number of Students Improving 2 Proficiency Levels

2

Number of Students Improving 3 Proficiency Levels

0

Total Number Tested

71

Transformed Percent Growth

39.58%

Transformed Statewide Percent Growth

54.65%

Chronic Absenteeism

Federal CSI-K8
Abbott Elementary (1234321)
FY 2022

EL Proficiency and Growth - 10%	View Data
Total EL Proficiency Points	1.00
Total EL Growth Points	2.00
EL Proficiency & Growth Points	3.00

Chronic Absenteeism - 2%		View Data
	Chronic Absenteeism Percent	Points
Fiscal Year 2022	22.85%	1.54

Chronic Absenteeism

Grade	Number Chronically Absent	Percent Chronically Absent
1	25	23.36%
2	19	17.43%
3	17	16.67%
4	28	25.93%
5	24	23.76%
6	25	25.25%
7	28	28.28%
8	27	31.76%
All Students	193	23.83%

Grade	Fiscal Year 2019 Percent Chronically Absent	Fiscal Year 2020* Percent Chronically Absent	Fiscal Year 2021** Percent Chronically Absent	Fiscal Year 2022 Percent Chronically Absent
1	28.57%	20.23%	0.00%	23.36%
2	29.09%	29.41%	0.00%	17.43%
3	28.89%	21.30%	0.00%	16.67%
4	20.91%	20.77%	0.00%	25.93%
5	21.11%	25.56%	0.00%	23.76%
6	25.38%	23.10%	0.00%	25.25%
7	20.00%	21.03%	0.00%	28.28%
8	29.04%	20.00%	0.00%	31.76%
All Students	29.33%	20.00%	0.00%	23.83%

Dropout Rate and Graduation Rate

Dropout Rate – 5%		View Data
Fiscal Year	Percentage	Points
2022	6.38%	4.68

Graduation Rate – 5%		View Data
Cohort	Percentage	Points
Cohort 2021	73.91%	3.70

Dropout Rate			
Subgroup	Number Dropped Out	Number Enrolled	Dropout Rate
African American	1	46	2.17%
Asian	0	17	.
Hispanic/Latino	2	130	1.54%
Native American	1	42	2.38%
Pacific Islander	0	19	.
Two or More Races	3	95	3.16%
White	7	190	3.68%
EL and FEP 1-4	1	41	2.44%
Students with Disabilities	0	102	.
Income Eligibility 1 & 2	1	188	0.53%
All Students	16	539	2.97%

Dropout Rate				
Subgroup	Fiscal Year 2019	Fiscal Year 2020	Fiscal Year 2021	Fiscal Year 2022
African American				2.17%
Asian				.
Hispanic/Latino	1.62%	3.85%		1.54%
Native American	0.00%	3.23%		2.38%
Pacific Islander				.
Two or More Races				3.16%
White		0.00%		3.68%
EL and FEP 1-4	2.17%	0.00%		2.44%
Students with Disabilities	2.33%	0.00%		.
Income Eligibility 1 & 2	1.83%	2.79%		0.53%
All Students				2.97%

Dropout Rate and Graduation Rate

Dropout Rate – 5%		View Data
Fiscal Year	Percentage	Points
2022	6.38%	4.68

Graduation Rate – 5%		View Data
Cohort	Percentage	Points
Cohort 2021	73.91%	3.70

Graduation Rate			
Subgroup	Number Graduated	Number in Cohort	Graduation Rate
African American	7	7	.
Asian	6	6	.
Hispanic/Latino	19	19	.
Native American	2	2	.
Pacific Islander	3	3	.
Two or More Races	18	18	.
White	20	22	90.91%
EL and FEP 1-4	16	16	.
Students with Disabilities	8	8	.
Income Eligibility 1 & 2	11	12	.
All Students	75	77	97.40%

Graduation Rate 4-Year Data				
Subgroup	Cohort 2018 Graduation Rate	Cohort 2019 Graduation Rate	Cohort 2020 Graduation Rate	Cohort 2021 Graduation Rate
African American				.
Asian				.
Hispanic/Latino	91.62%	93.85%		.
Native American	90.00%	93.23%		.
Pacific Islander				.
Two or More Races				.
White		94.23%		90.91%
EL and FEP 1-4	92.17%	98.62%		.
Students with Disabilities	92.33%	94.36%		.
Income Eligibility 1 & 2	91.83%	92.79%		91.66%
All Students				97.40%



School Accountability Dashboard

		State			Federal			
Entity Name	Entity ID	K-8 Letter Grade	9-12 Letter Grade	Non-Typical School Configuration Letter Grade	Additional Targeted Support & Improvement (aTSI) *	Comprehensive Support & Improvements (CSI) - Low Achievement *	Comprehensive Support & Improvements (CSI) - Low Graduation	Targeted Support & Improvement (TSI) *
Preston High School	9876789		P	-	aTSI	CSI-912	CSI-G	

- CSI Low Achievement uses a 4-year graduation rate
 - Student Cohort Year
 - Students must graduate by September 1st of Cohort Year
- CSI Low Graduation uses a 5-year graduation rate
 - Student Cohort Year
 - Students must graduate by July 1st of the year after their Cohort Year
- Based on Enrollment Codes (not FAY students only)

**Federal CSI (G)
Preston High School (9876789)
FY 2022**

5-Year Graduation Rate				
	Cohort 2018	Cohort 2019	Cohort 2020	Cohort 2021
All Students	70.29%	65.48%	58.28%	63.54%

Subgroup	Number in Cohort	Number Graduated	Cohort 2021 Graduation Rate
African American	18	12	66.6
Asian	4	2	50
Hispanic/Latino	84	57	67.9
Native American	12	7	58.3
Pacific Islander	2	1	50
Two or More Races	15	8	33.3
White	66	42	63.6
EL and FEP 1-4	21	17	81.0
Students with Disabilities	22	12	54.5
Income Eligibility 1 & 2	79	37	46.8
All Students	203	129	63.5

Enrollment	
2021-2022 October 1, 2021 Accountability Enrollment	256
Less than 100	No



Accountability Dashboard

- All reports for State and Federal
- Summary Statistics
- Data for each measurement in your school model

A note about the data

- Data is continually updated and stored in different storage files
- Discrepancies are possible
 - Graduation data may be different
 - Accountability Grad Rate Report
 - CSI-Graduation calculation
 - CSI-LA Graduation component
 - Counts may change from the date of calculation



State and Federal Accountability

- [Accountability: State & Federal Profile](#)
- [Traditional A-F College and Career Readiness Indicator Self Reporting Spreadsheet](#)
- [Traditional A-F College and Career Readiness Indicator Self Reporting Spreadsheet Instructions](#)
- [Alternative A-F College and Career Readiness Indicator Self Reporting Spreadsheet](#)
- [Alternative A-F College and Career Readiness Indicator Self Reporting Spreadsheet Instructions](#)

Accountability Reports

- [Grad Rate Report](#)
- [Dropout Rate Report](#)
- [Persistence Rate Report](#)
- [CCRI Reports](#)

Student Level Assessment Data

- [Download Testing Data](#)

Accountability Administration

- [File Upload Manager](#)
- [Application Messaging Tool](#)

State and National Assessment Data

- [Student Demographic Corrections](#)

Graduation Rate Comparisons

Graduation Rate – 5%		View Data
Cohort	Percentage	Points
Cohort 2021	73.91%	3.70

5-Year Graduation Rate				
	Cohort 2018	Cohort 2019	Cohort 2020	Cohort 2021
All Students	70.29%	65.48%	58.28%	63.54%

Subgroup	Number in Cohort	Number Graduated	Cohort 2021 Graduation Rate
African American	18	12	66.6
Asian	4	2	50
Hispanic/Latino	84	57	67.9
Native American	12	7	58.3
Pacific Islander	2	1	50
Two or More Races	15	8	33.3
White	66	42	63.6
EL and FEP 1-4	21	17	81.0
Students with Disabilities	22	12	54.5
Income Eligibility 1 & 2	79	37	46.8
All Students	203	129	63.5

Entity Name	Entity Code	Type	# of Graduates	# in Cohort	Graduation Rate(%)
Preston High School	9876789	All	127	204	62.25
Preston High School	9876789	American Indian or Alaska Native	7	12	58.33
Preston High School	9876789	Asian	1	5	20
Preston High School	9876789	Black/African American	11	19	57.89
Preston High School	9876789	English Learner	16	21	76.19
Preston High School	9876789	English Learner and FEP 1-4	16	21	76.19
Preston High School	9876789	English Learner Cohort	11	16	68.75
Preston High School	9876789	Female	67	102	65.69
Preston High School	9876789	Foster Care	2	5	40

- 4-year rate
 - CSI-LA
 - TSI/aTSI
- 5-year rate
 - CSI-G
- Grad Rate Report



State and Federal Dashboard



**Accountability:
State & Federal**

Welcome Russel Potter!

Russel Potter


Home ADEConnect

Accountability Logout

Home

Fiscal Year: 2021



 Download A - F Detail as an Excel File

Warning! Due to the volume of your static file, the download may take several minutes.

Show 10 entries

Search:

		State			Federal			
Entity Name	Entity ID	K-8 Letter Grade	9-12 Letter Grade	Non-Typical School Configuration Letter Grade	Additional Targeted Support & Improvement (aTSI) *	Comprehensive Support & Improvement (CSI) - Low Achievement *	Comprehensive Support & Improvement (CSI) - Low Graduation	Targeted Support & Improvement (TSI) *

- Static File: Student-level data
 - Demographics
 - Scores
 - Metrics



I have my data – now what?



Define your goals

- Get out of identification
- Improve student learning outcomes
- Find ‘high-leverage’ areas to improve
- Identify bubble kids or outliers
- Performance evaluations

I have my data – now what?

It's not just a number

- A person
- A snapshot
- One day



Who needs the data?

- What about your culture drives a data-responsive mindset?
- What about your institutional infrastructure supports data-driven decisions?
- How do you empower your talent to engage with data?



Recap

The Accountability Dashboard

- Summary identification data
- Model splits and calculations
- Component calculations

The Static File

- Student-level data
 - All tests and records for the year
 - Includes year-over-year comparisons for growth

CSI 102b - Basic Analysis with the Static File

Download a copy of your Static File

Querying the data in Excel

- Organization
- Filters
- Identifying students
- Comparisons

Next Steps

CSI 102a – Student Data and the
Accountability Dashboard

CSI 102b – Introduction to the Static File

CSI 103 – Interrogating the Static File

Questions?

- russel.potter@azed.gov
- 602-542-3281