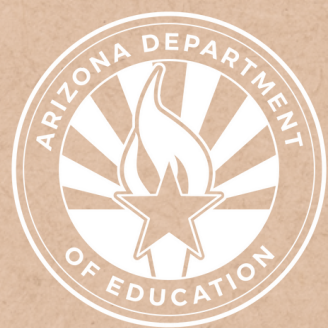


Meal or No Meal

Breakfast Edition



Health and Nutrition Services
Arizona Department of Education





Disclaimer

This training was developed by the Arizona Department of Education (ADE) Health and Nutrition Services Division (HNS). The content in this training is intended for professionals operating one or more USDA Child Nutrition Programs in Arizona under the direction of ADE. The information in this training is subject to change. Attendees are encouraged to access professional development materials directly from the training library to prevent use of outdated content.

Intended Audience

This training is intended for School Food Authorities (SFAs) operating the National School Lunch Program (NSLP). All regulations are specific to operating the NSLP under the direction of ADE.

Objective

At the end of this training, attendees should be able to recognize reimbursable lunches according to meal pattern requirements for Offer Versus Serve at the Point of Service.

In game format, attendees will be provided 9 different trays in which they must identify if the tray is reimbursable for lunch for Offer vs. Serve. Training can be completed by single user or used by a facilitator in a group training.

TRAINING HOURS

Information to include when documenting this training for Professional Standards:

Training Title: Meal or No Meal

Key Area: 2000 - Operations

Learning Code: 2310

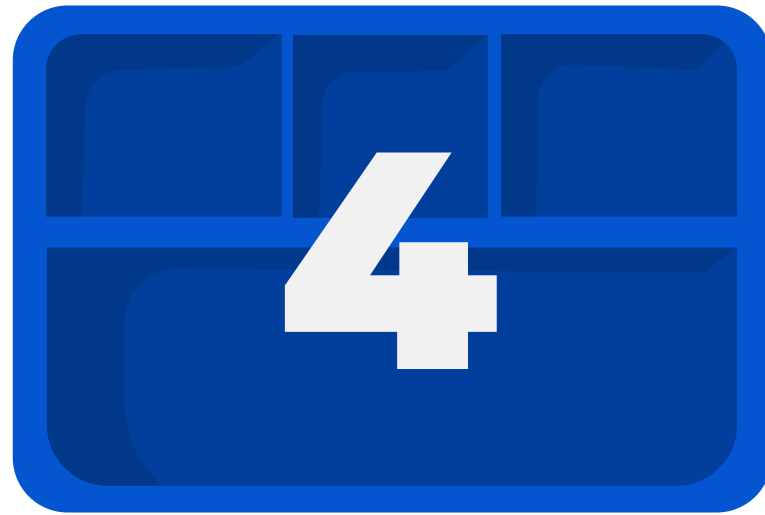
Length: 15 minutes*

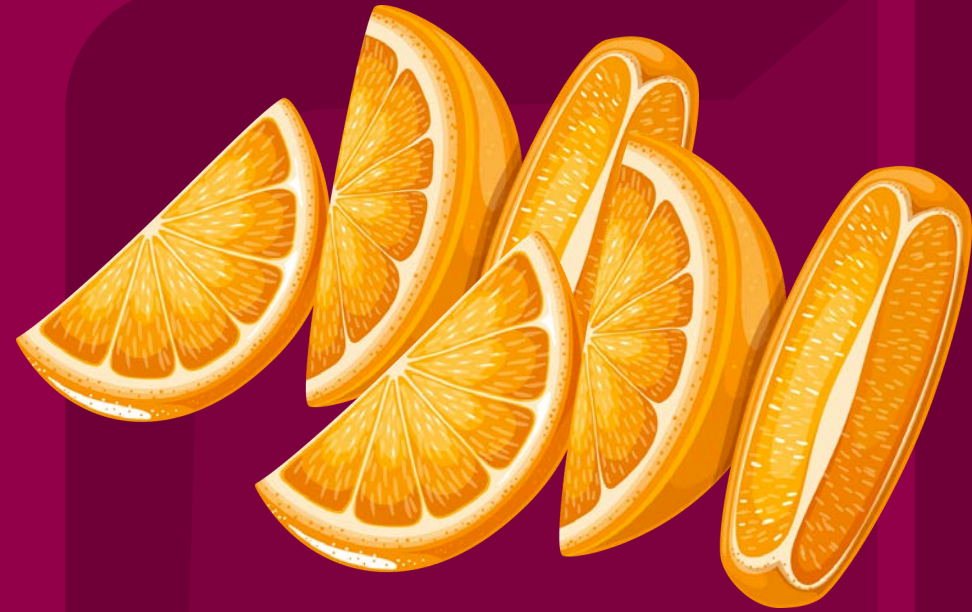
*Note, if this training has been modified, please document the amount of time the training took.

Facilitator Directions



- Using Slide Show mode, click along to each tray number and reveal a tray with served food.
- Ask group to determine if that tray would be considered a reimbursable meal at breakfast.
- Click on the next slide to reveal the answer: Reimbursable or Not Reimbursable.





CREDITING INFORMATION

- **2oz eq.** - Whole Grain Tortilla
- **3oz eq.** - Egg and Sausage
- **1/2 cup** - Orange Slices

YES!

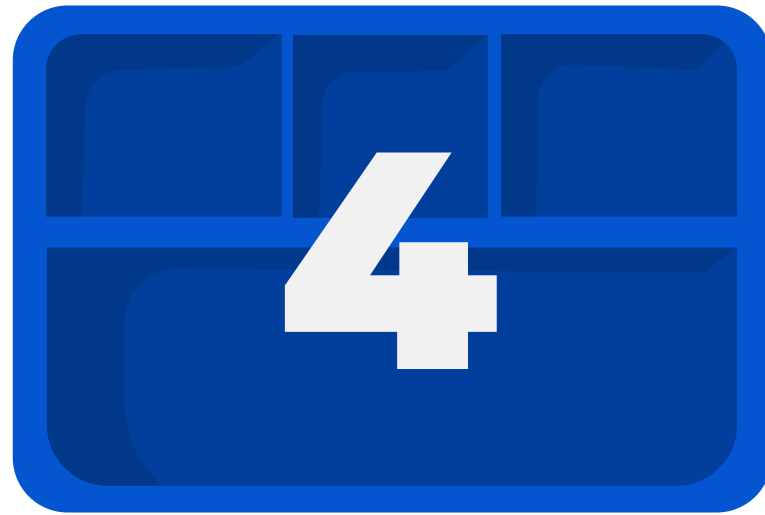
REIMBURSABLE

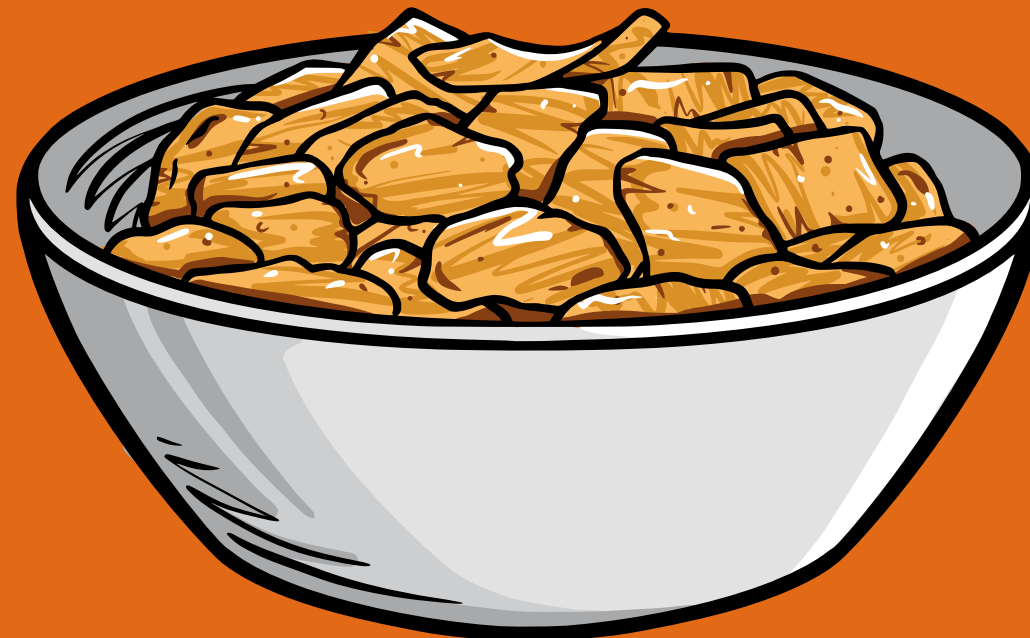
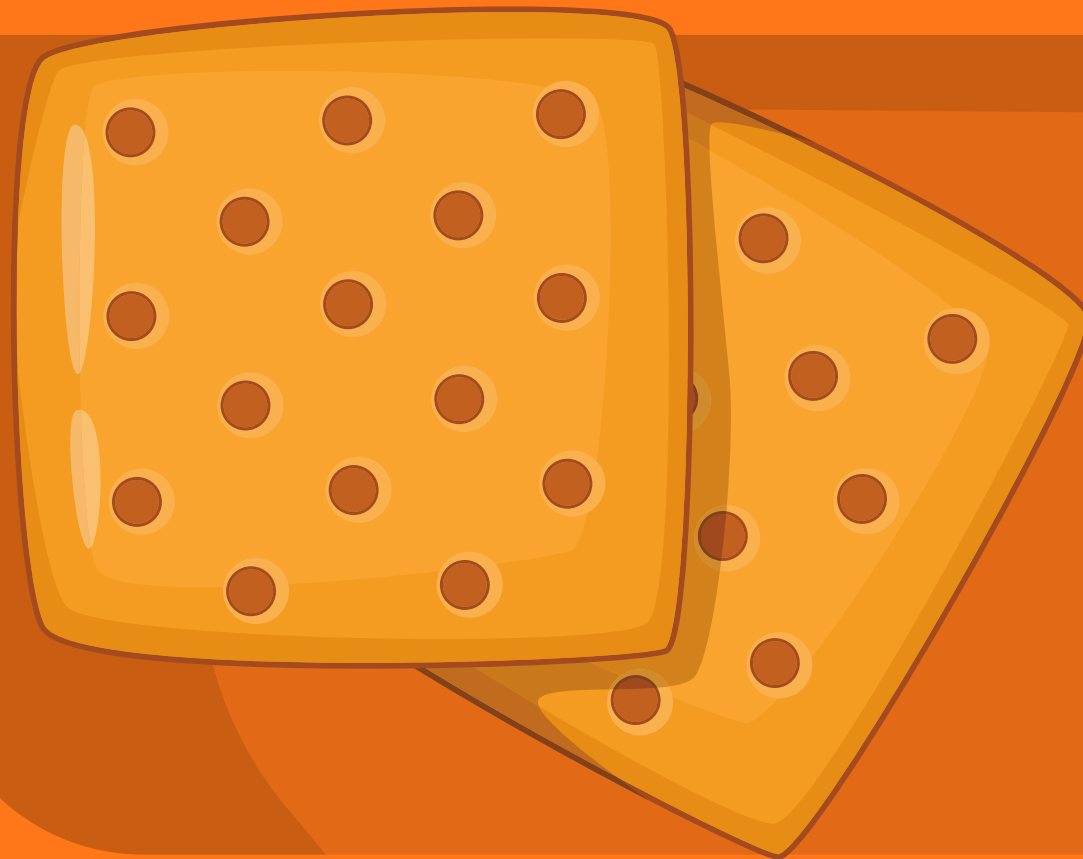
This meal is reimbursable since it contains at least 3 items and at least 1/2 cup fruit/vegetable.

- Under OVS, a student must be offered at least four food items and must select at least three food items, one of which must be 1/2 cup of fruit or vegetables.



REIMBURSABLE





CREDITING INFORMATION

- **1oz eq.** - Whole Grain Cereal
- **1oz eq.** - Graham Crackers
- **1 cup** - Fat-Free Milk

NO!

NOT REIMBURSABLE

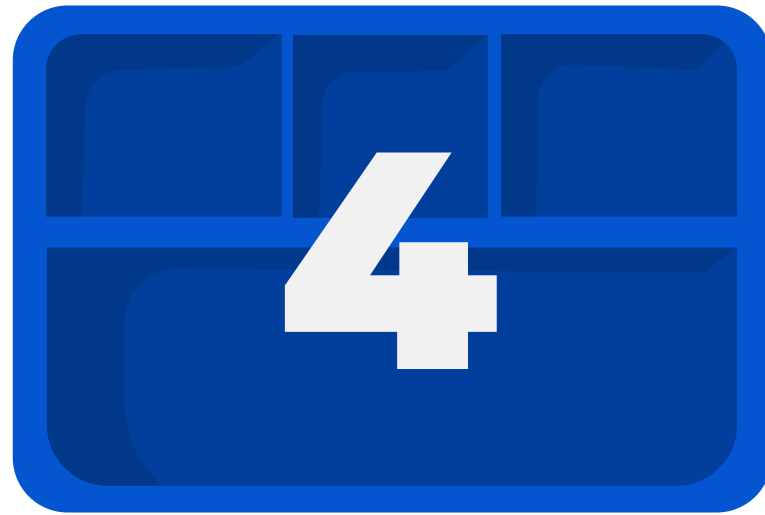
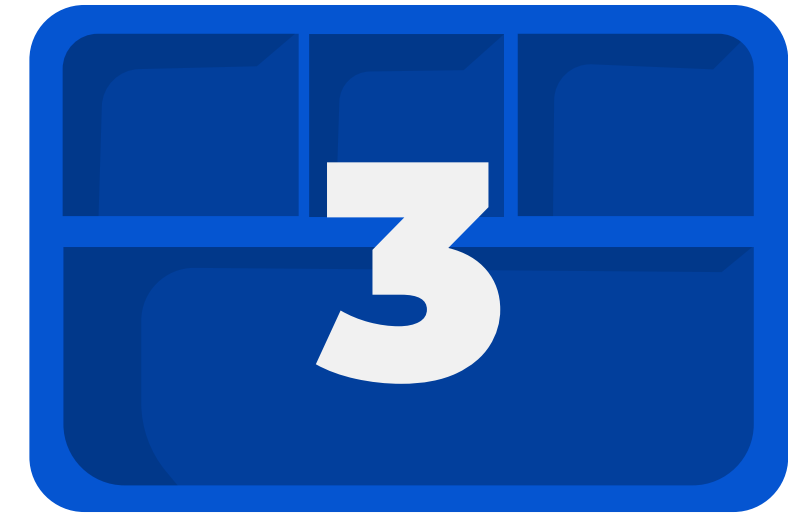
This meal is **NOT** reimbursable because **there is no fruit or vegetable.**

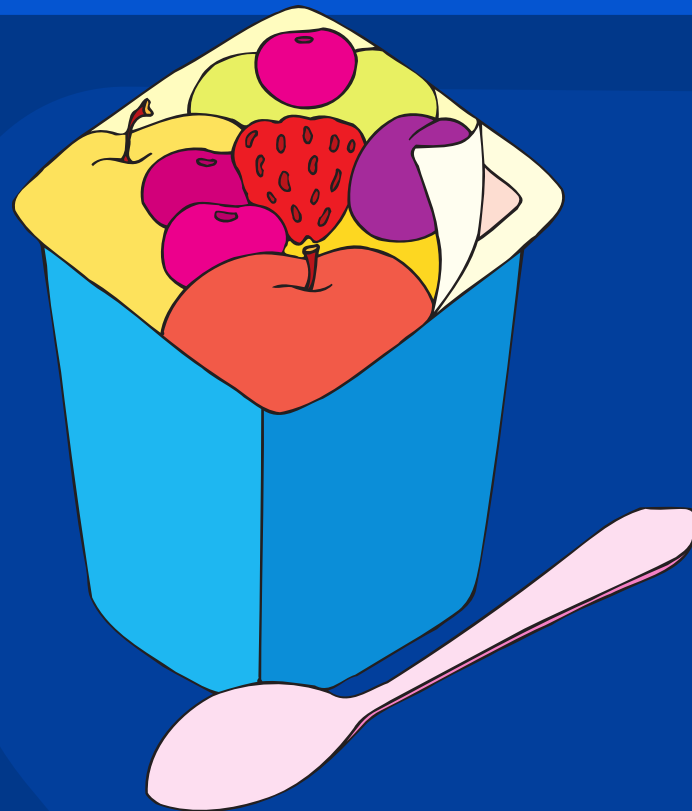
- Under OVS, a student must be offered at least four food items and must select at least three food items, **one of which must be 1/2 cup of fruit or vegetables.**



NOT

REIMBURSABLE





CREDITING INFORMATION

- **2oz eq.** - Apple Loaf
- **1/2 cup** - Fruit Cocktail
- **1 cup** - Fat-Free
Chocolate Milk

YES!

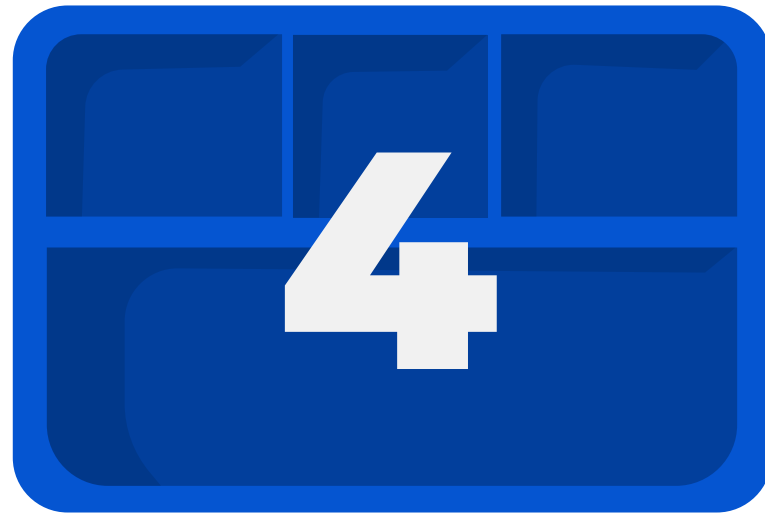
REIMBURSABLE

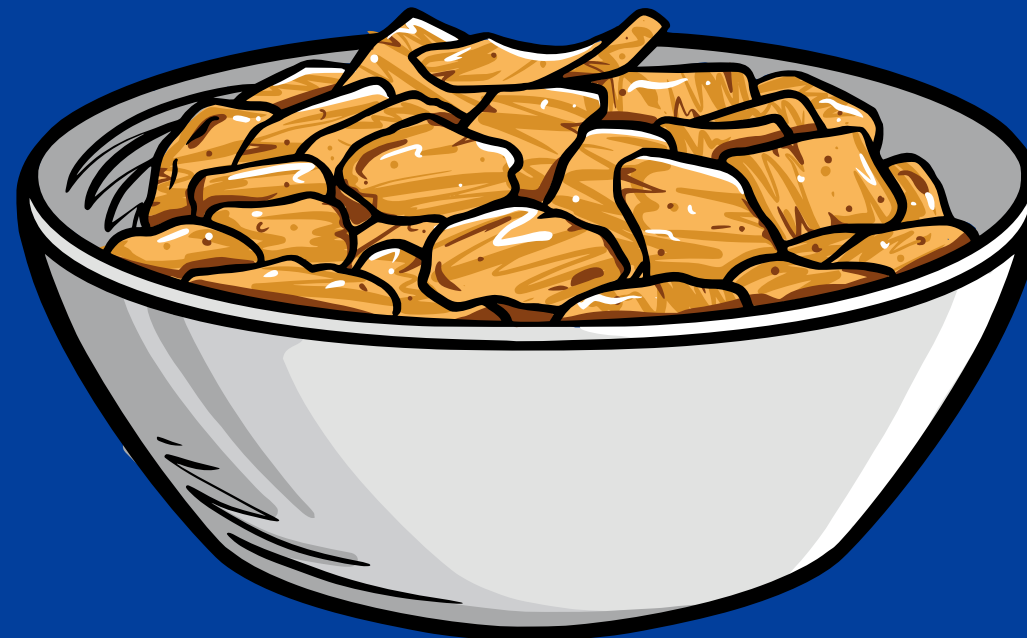
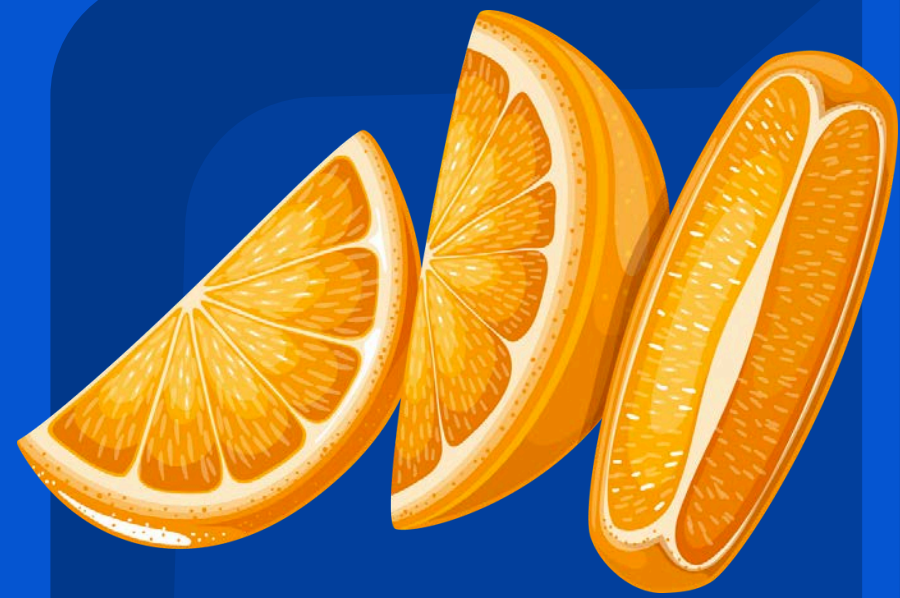
This meal is reimbursable since it contains at least 3 items and at least 1/2 cup fruit/vegetable.

- Under OVS, a student must be offered at least four food items and must select at least three food items, one of which must be 1/2 cup of fruit or vegetables.



REIMBURSABLE





CREDITING INFORMATION

- **1oz eq.** - Whole Grain Cereal
- **1/4 cup** - Sliced Oranges
- **1 cup** - Low-Fat Milk

NO!

NOT REIMBURSABLE

This meal is **NOT** reimbursable because **the oranges are only 1/4 cup.**

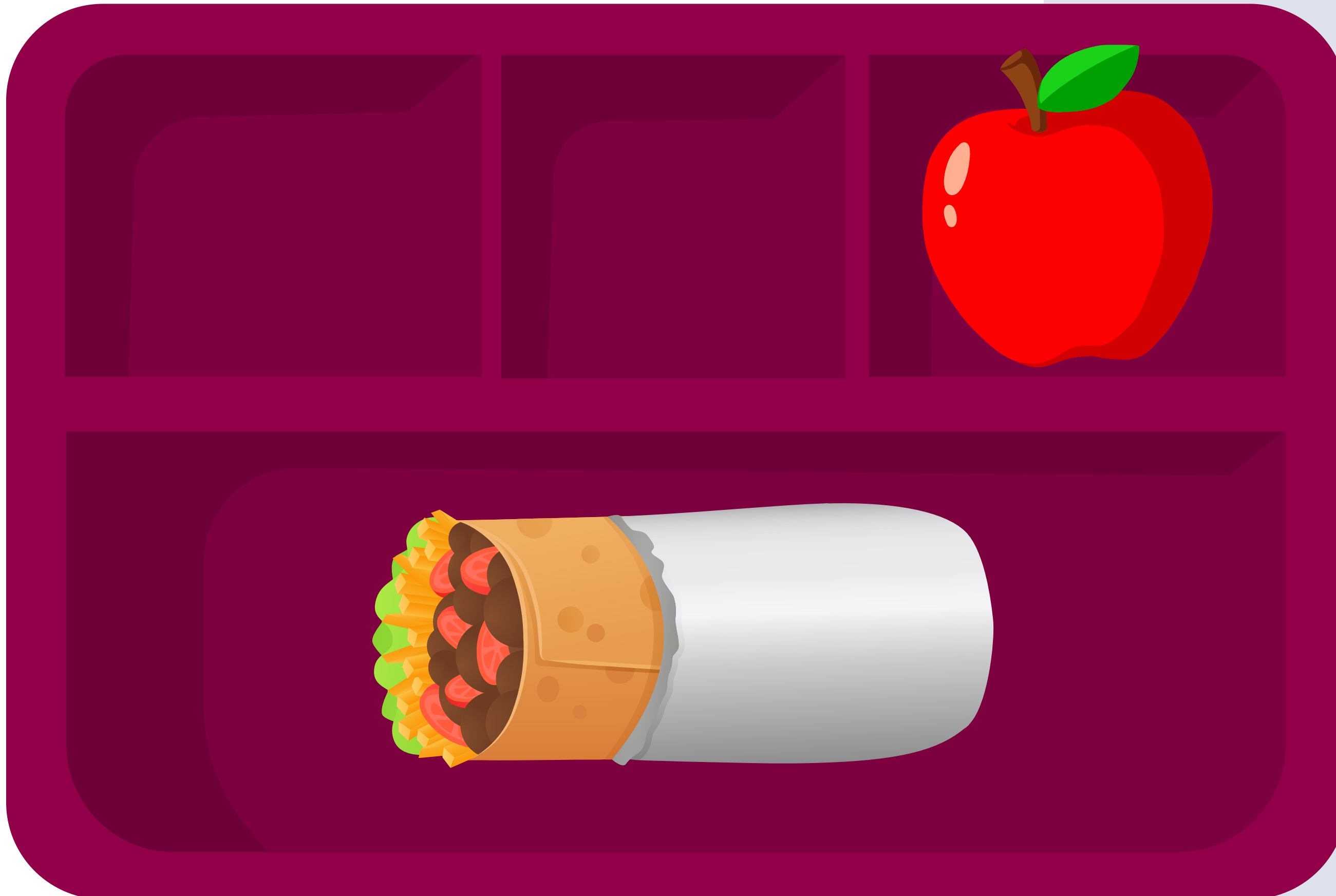
- Under OVS, a student must be offered at least four food items and must select at least three food items, one of which must be **1/2 cup** of fruit or vegetables.



NOT

REIMBURSABLE





CREDITING INFORMATION

- **2oz eq.** - Whole Grain Tortilla
- **3oz eq** - Egg and Sausage
- **1/2 cup** - Apple

YES!

REIMBURSABLE

This meal is reimbursable since it contains at least 3 items and at least 1/2 cup fruit/vegetable.

- Under OVS, a student must be offered at least four food items and must select at least three food items, one of which must be 1/2 cup of fruit or vegetables.



REIMBURSABLE





CREDITING INFORMATION

- **2oz eq.** - Yogurt
- **1/2 cup** - Fruit
- **1 cup** - Low-Fat Milk

YES!

REIMBURSABLE

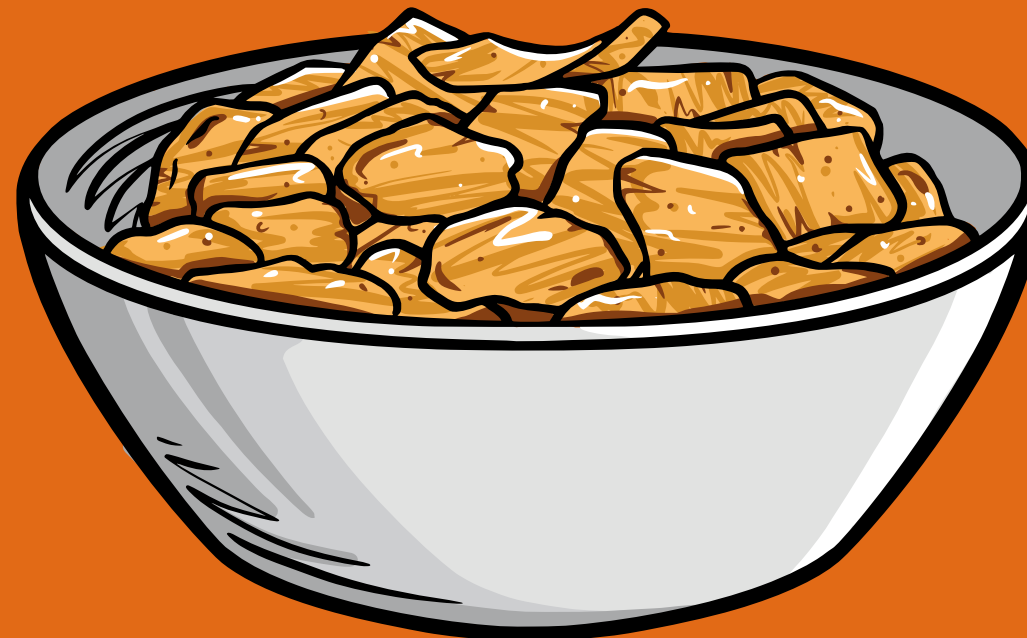
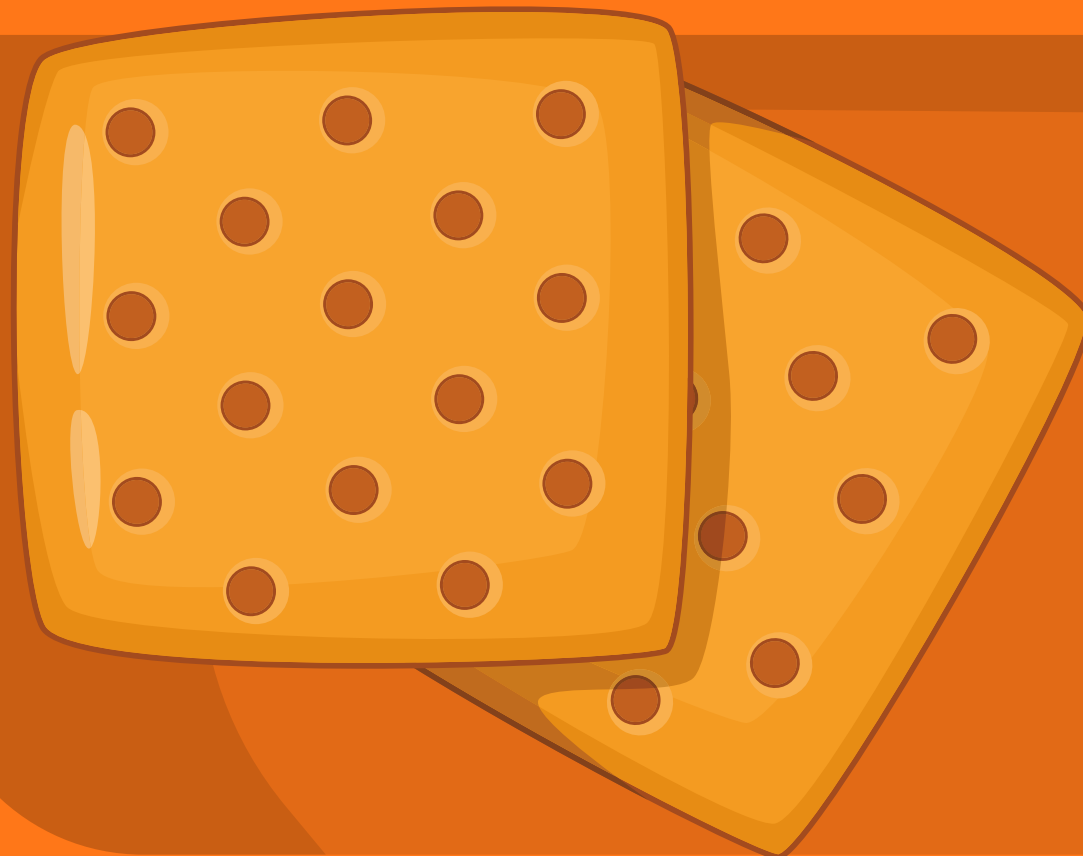
This meal is reimbursable since it has at least 3 items and at least 1/2 cup fruit/vegetable.

- Under OVS, a student must be offered at least four food items and must select at least three food items, one of which must be 1/2 cup of fruit or vegetables.



REIMBURSABLE





CREDITING INFORMATION

- **1oz eq.** - Whole Grain Cereal
- **1oz eq.** - Graham Crackers
- **1/2 cup** - Fresh Pear

YES!

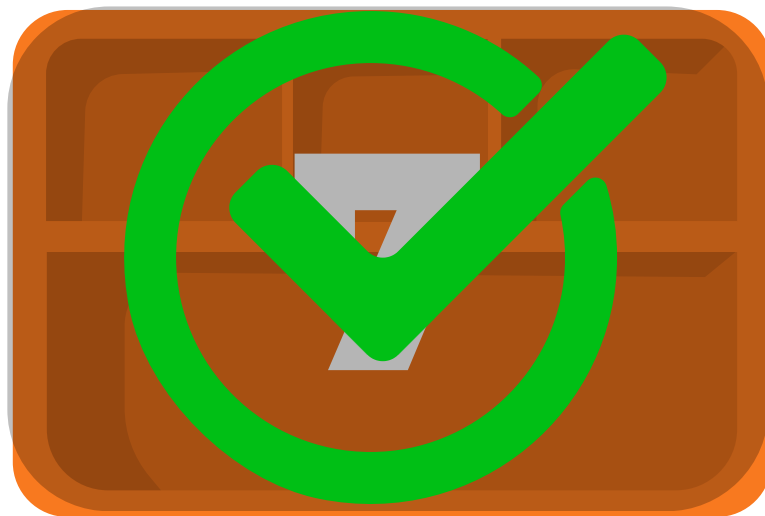
REIMBURSABLE

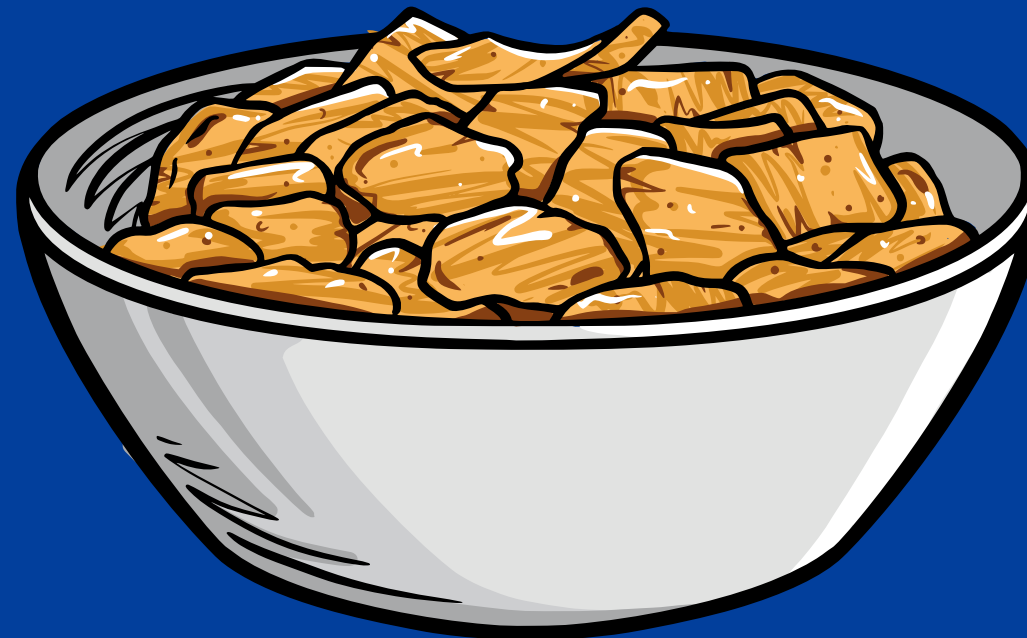
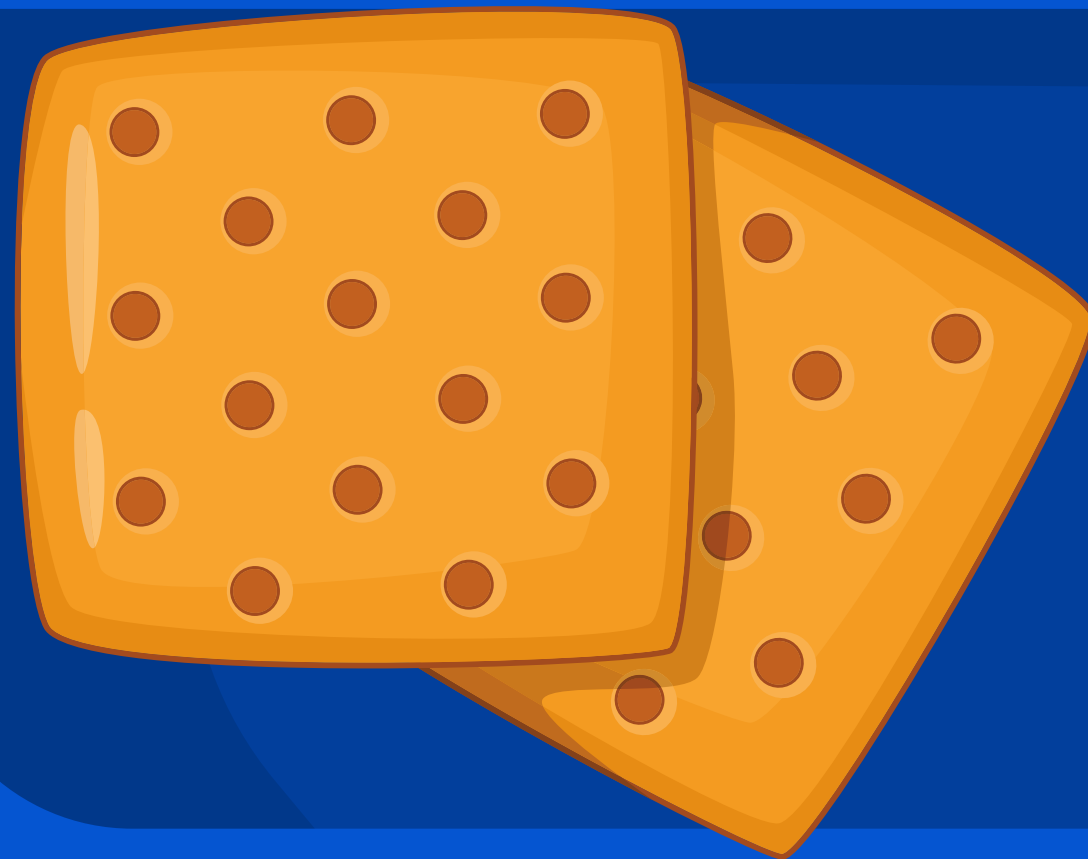
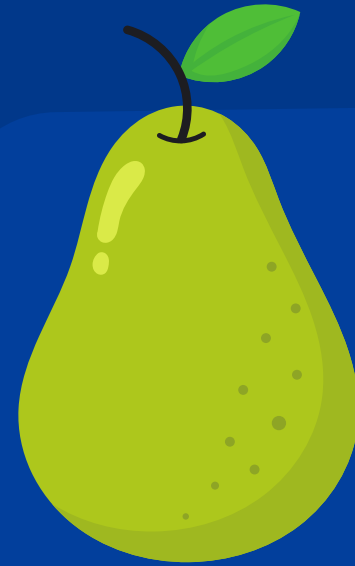
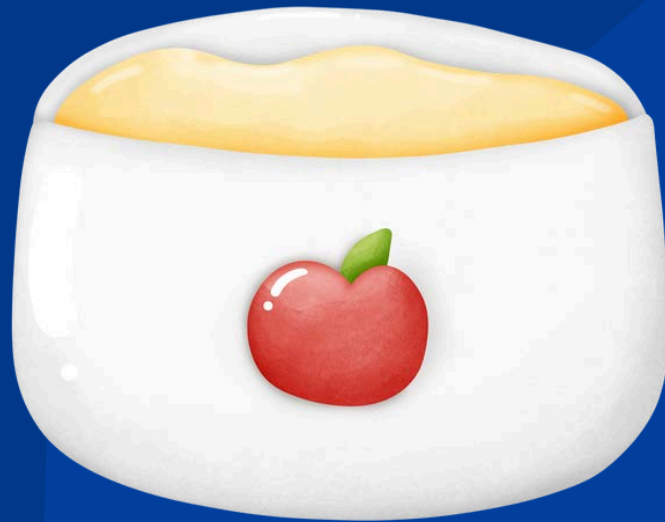
This meal is reimbursable since it contains at least 3 items and at least 1/2 cup fruit/vegetable.

- Under OVS, a student must be offered at least four food items and must select at least three food items, one of which must be 1/2 cup of fruit or vegetables.



REIMBURSABLE





CREDITING INFORMATION

- **1oz eq.** - Whole Grain Cereal
- **1oz eq.** - Graham Crackers
- **1/2 cup** - Pear
- **1/2 cup** - Apple Sauce
- **1 cup** - Low-Fat Milk

YES!

REIMBURSABLE

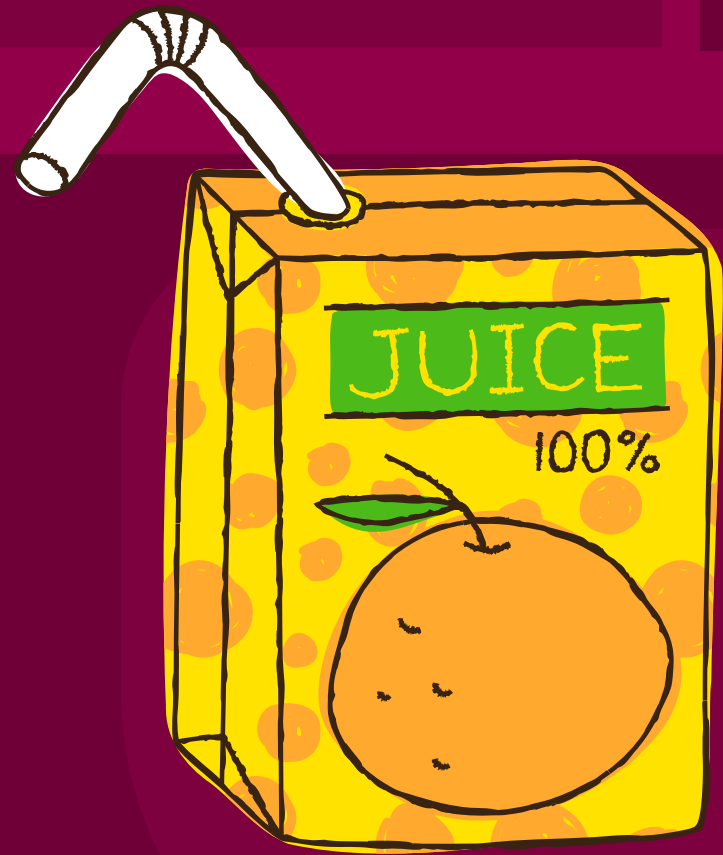
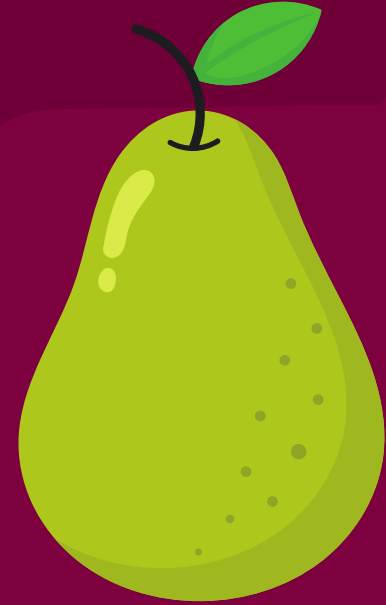
This meal is reimbursable since it contains at least 3 items and at least 1/2 cup fruit/vegetable.

- Under OVS, a student must be offered at least four food items and must select at least three food items, one of which must be 1/2 cup of fruit or vegetables.



REIMBURSABLE





CREDITING INFORMATION

- **1oz eq.** - Whole Grain Cereal
- **1/2 cup** - Fresh Pear
- **1/2 cup** - Orange Juice

YES!

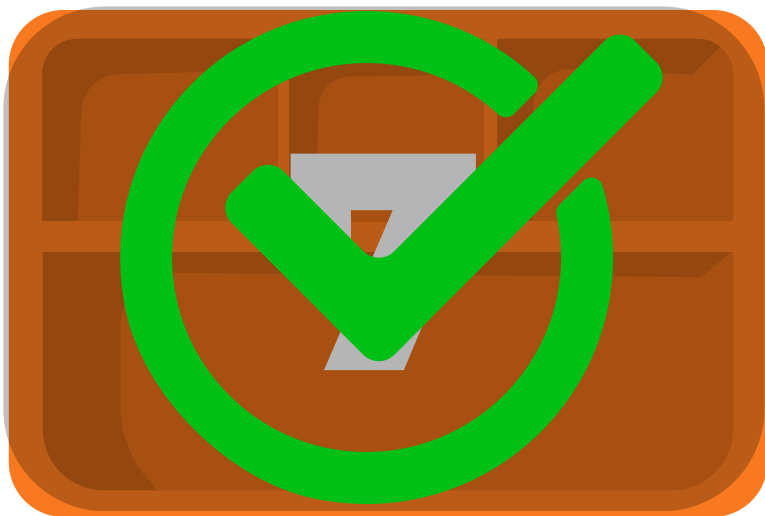
REIMBURSABLE

This meal is reimbursable since there is at least 3 items and at least 1/2 cup fruit/vegetable.

- Under OVS, a student must be offered at least four food items and must select at least three food items, one of which must be 1/2 cup of fruit or vegetables.



REIMBURSABLE



CONTACT US

If you have a question or require additional assistance, please contact your assigned specialist or contact HNS.



602-542-8700



ContactHNS@azed.gov



www.azed.gov/hns





Congratulations

**You have completed the Online Course:
Meal or No Meal - Breakfast Edition**

Information to include when documenting this training for Professional Standards:

**Training Title:
Meal or No Meal -
Breakfast Edition**

**Key Area: 2000 – Operations
Learning Code: 2310
Length: 15 minutes**

Please note, attendees must document the amount of training hours indicated on the training despite the amount of time it takes to complete it.

Certificate

Requesting a training certificate

Please click the button to complete a brief survey about this online training. Once the survey is complete, you will be able to print your certificate of completion from Survey Monkey.



Information to include when documenting this training for Professional Standards:

Training Title:

**Meal or No Meal -
Breakfast Edition**

Key Area: 2000 – Operations

Learning Code: 2310

Length: 15 minutes

Please note, attendees must document the amount of training hours indicated on the training despite the amount of time it takes to complete it.





In accordance with federal civil rights law and U.S. Department of Agriculture (USDA) civil rights regulations and policies, this institution is prohibited from discriminating on the basis of race, color, national origin, sex (including gender identity and sexual orientation), disability, age, or reprisal or retaliation for prior civil rights activity.

Program information may be made available in languages other than English. Persons with disabilities who require alternative means of communication to obtain program information (e.g., Braille, large print, audiotape, American Sign Language), should contact the responsible state or local agency that administers the program or USDA's TARGET Center at (202) 720-2600 (voice and TTY) or contact USDA through the Federal Relay Service at (800) 877-8339.

To file a program discrimination complaint, a Complainant should complete a Form AD-3027, USDA Program Discrimination Complaint Form which can be obtained online at: <https://www.usda.gov/sites/default/files/documents/ad-3027.pdf>, from any USDA office, by calling (866) 632-9992, or by writing a letter addressed to USDA. The letter must contain the complainant's name, address, telephone number, and a written description of the alleged discriminatory action in sufficient detail to inform the Assistant Secretary for Civil Rights (ASCR) about the nature and date of an alleged civil rights violation. The completed AD-3027 form or letter must be submitted to USDA by:

1. mail: U.S. Department of Agriculture Office of the Assistant Secretary for Civil Rights
1400 Independence Avenue, SW Washington, D.C. 20250-9410; or
2. fax: (833) 256-1665 or (202) 690-7442; or
3. email: Program.Intake@usda.gov

This institution is an equal opportunity provider.